

FUND DETAILS

Fund Objective	Aims to provide investors with high capital growth over the medium-to-long term through investment in high growth and situational stocks* <i>*Situational stocks are referring to stocks that the prices may be affected arising from a certain situation. For example, in a situation of merger and/or acquisition, the share prices of the acquiring and/or acquired companies may go up or down significantly compared to the prices during normal days.</i>
Asset Allocation	Minimum 70% and maximum 95% in a diversified portfolio of equities & equity-related securities; At least 5% in liquid assets.
Investment Manager	Phillip Capital Management Sdn Bhd
Trustee	CIMB Commerce Trustee Berhad
Distribution Policy	Incidental
Fund Category/Type	Equity / Growth
Launch Date	18 June 2003
Unit NAV	RM1.3147
Fund Size	RM47.2821 million

INVESTOR'S PROFILE

- Investors who seek capital growth
- Parents investing for young children
- Higher risk tolerance
- Medium to long-term investment horizon

FEES, CHARGE & TRANSACTION DETAILS

Sales Charge	Up to 5.50%	Minimum Initial Investment	RM500
Redemption Charge	Nil	Minimum Additional Investment	RM100
Management Fee	Up to 1.50% p.a.	Minimum Regular Investment	RM100
Trustee Fee	0.06% of NAV or a minimum of RM12,000 p.a.		

LIPPER LEADERS RATING

	Total Return	Consistent Return
5 years	1	1
10 years	5	2
Overall	2	1

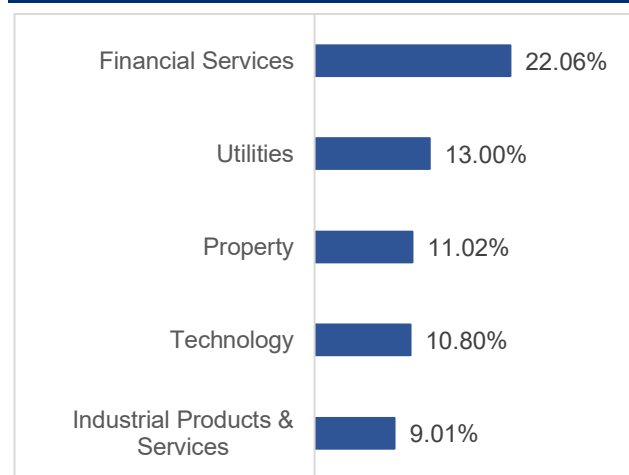
Lipper Leaders Key

Highest	5
Lowest	1

Source: Lipper Leaders

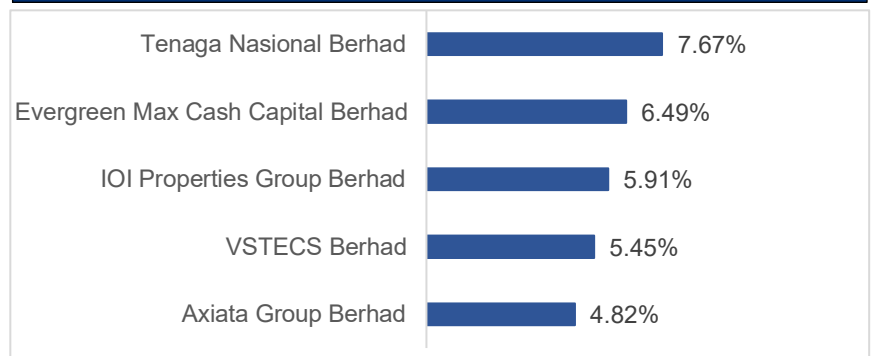
The Lipper Leaders Ratings System is a set of tools that guide investors and their advisors to select funds that suit individual investment styles and goals. It uses investors-centred criteria to deliver a simple, clear description of a fund's success in meeting certain goals, such as preserving capital or building wealth through consistent strong returns. Lipper Leader ratings are derived from highly sophisticated formulas that analyses funds against clearly defined criteria. Each fund is ranked against its peers based on the metric used (such as Total Return or Expense), and then the top 20% of funds in that ranking receive the Lipper Leader designation. Lipper Leaders measures are not predictive of future performance, but they do provide context and perspective for making knowledgeable fund investment decisions.

TOP 5 SECTOR ALLOCATION*



*As percentage of NAV

TOP 5 HOLDINGS*



PERFORMANCE TABLE

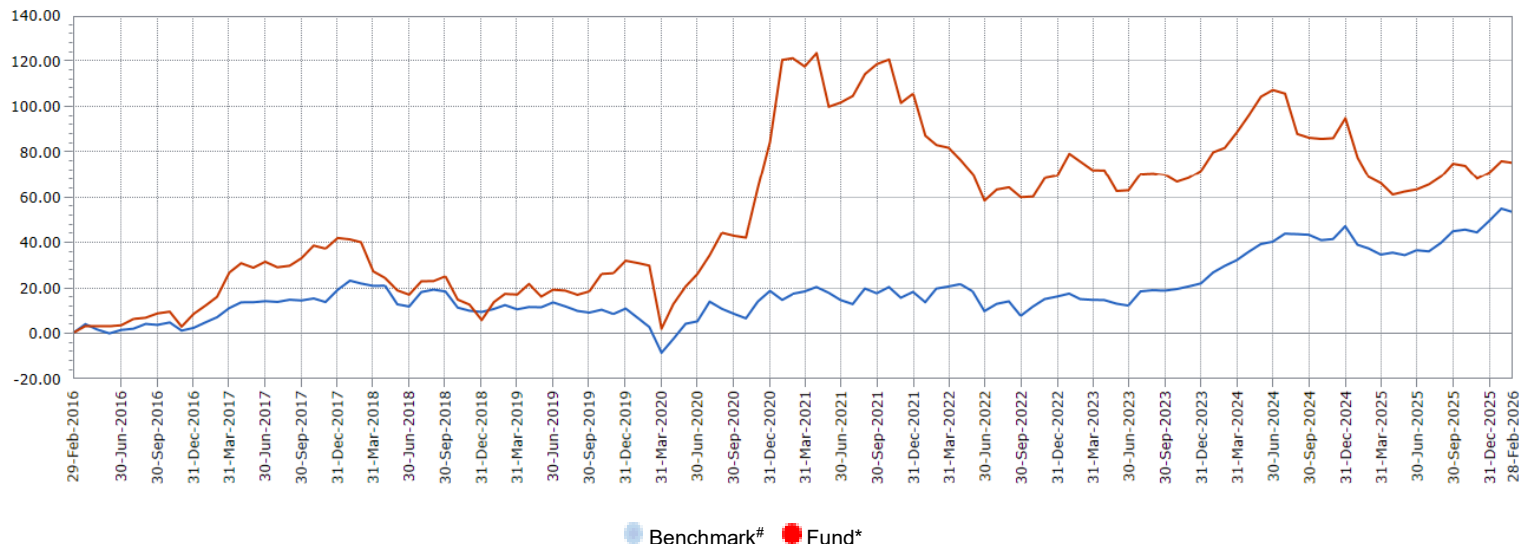
	1 Mth	3 Mths	6 Mths	1 Yr	3 Yrs	5 Yrs	10 Yrs	YTD	Since Launch
Fund*	-0.42	4.31	3.70	3.83	-0.30	-20.85	75.31	2.57	516.33
Benchmark#	-0.95	6.23	9.71	11.69	33.39	30.77	53.36	2.64	312.04

CALENDAR YEAR RETURNS (%)

	2018	2019	2020	2021	2022	2023	2024	2025
Fund*	-25.49	24.73	39.98	11.58	-17.69	1.34	13.59	-12.36
Benchmark#	-8.20	1.38	6.99	-0.37	-1.72	4.98	20.66	1.60

*Source: Lipper for Investment Management, 28 February 2026. Fund sector: Equity Malaysia
#Benchmark: FTSE Bursa Malaysia EMAS TR, source: Bloomberg, 28 February 2026.

FUND PERFORMANCE



FUND MANAGER'S REVIEW

The FTSE Bursa Malaysia KLCI (KLCI) declined by -1.4% month-on-month (MoM) in February 2026, reversing earlier gains amid rising geopolitical tensions and uncertainties surrounding United States (US) tariff policies. The index reached a year-high weekly close of 1,753 points on 20 February, supported by stronger-than-expected fourth quarter 2025 (4Q25) gross domestic product (GDP) growth of 6.3% and a stronger ringgit at RM3.89/US\$1. However, market sentiment later turned cautious due to regional risk-off sentiment linked to technology valuation concerns and rising geopolitical risks (US-Iran conflict).

In February 2026, the KLCI underperformed most local indices, except for the FTSE Bursa Malaysia Small Cap Index (FBM Small Cap). The FTSE Bursa Malaysia Mid 70 Index (FBM Mid 70) was the strongest performer, while the FBM Small Cap and FBM KLCI were the weakest performers during the month. For the first two months of 2026 (2M26), the FBM Mid 70 was the best-performing index, posting a gain of 4.4%, followed by the FTSE Bursa Malaysia Top 100 Index (FBM Top 100), which increased by 2.7%. Meanwhile, the FTSE Bursa Malaysia ACE Index (FBM ACE) recorded the steepest year-to-date (YTD) decline of -3.1%, followed by the FTSE Bursa Malaysia Fledgling Index (FBM Fledgling) which declined by -0.7%.

By sector, the transport sector was the top performer, rising 2.2% MoM in February 2026, followed by the property sector, which gained 2.0% MoM. In contrast, the telecommunications and industrial sectors were the weakest performers, declining by 3.3% MoM and 2.7% MoM, respectively. For 2M26, the property sector (+11.5%) and finance sector (+7.0%) were the strongest performers. Meanwhile, the telecommunications and construction sectors were the worst performers, posting declines of 4.3% and 3.5% respectively.

In February, West Texas Intermediate (WTI) crude oil rose by 2.8% MoM, closing at US\$67.02 per barrel, while Brent crude oil rose by 2.5% MoM, closing at US\$72.48 per barrel. Crude palm oil closed at RM3,989/ per metric ton (MT), down 4.1% from the previous month, while spot gold rose by 11.3%, ending the month at US\$5,247.9/ per ounce (oz). On the currency-wise, the Malaysian ringgit strengthened by 1.3% mMoM against the US dollar, closing at RM3.8925/USD. In comparison, the US Dollar Index rose by 0.6%, ending the month at 97.6 points.

MARKET OUTLOOK / STRATEGY

Looking into 2026, the FBM KLCI is expected to maintain a positive uptrend, supported by improving corporate earnings, resilient domestic macro fundamentals and a favourable liquidity environment. Although occasional profit-taking may occur, any market pullbacks are likely to be temporary and could provide opportunities for accumulation.

From a sectoral perspective, Financials remain a core overweight, supported by healthy loan growth, resilient margins and stable asset quality, providing both earnings growth and attractive dividend yield. Construction and Infrastructure are positioned for structural earnings upcycle driven by public infrastructure spending and a recovery in private capital expenditures, offering strong earnings visibility. Utilities and Renewable Energy offer defensive stability with long-term growth supported by energy transition initiatives. Meanwhile, Technology and Consumer sectors offer selective upside, supported by a global technology recovery and steady domestic consumption. Energy remains suitable for tactical allocation, supported by geopolitical risks and solid cash flow generation.

DISCLAIMER

VOLATILITY FACTOR

Based on the Fund's portfolio returns as at 28 February 2026, the Volatility Factor (VF) for this Fund is 11.65 classified as "High" (Source: Lipper). "High" includes funds with VF that are above 10.245 but not more than 13.525 (Source: Lipper). The VF means there is a possibility for the fund in generating an upside return or downside return around this VF. The Volatility Class (VC) is assigned by Lipper based on quintile ranks of VF for qualified funds. VF is subject to monthly revision and VC will be revised every 6 months. The fund's portfolio may have changed since this date and there is no guarantee that the fund will continue to have the same VF or VC in the future. Presently, only funds launched in the market for at least 36 months will display the VF and its VC.

DISCLAIMER

Important Information: This factsheet has been prepared by Phillip Mutual Berhad based on publicly available information, internally developed data and other sources believed to be reliable. While all reasonable care has been taken to ensure that the information provided is accurate and the opinions are fair and reasonable, neither Phillip Mutual Berhad, nor any of its directors or employees, shall in any way be responsible for any reliance placed on its contents. Performance data is based on the change in the Fund's Net Asset Value (NAV) per unit over a specific period. Unless otherwise stated, figures are shown on a cumulative basis after including the income distribution (if any). The Calendar Year Return reflects the fund's performance from January to December, incorporating both NAV changes and any income distributions made during the year. Unit prices and income distributions, if any, may fluctuate, and past performance is not necessarily an indication of future performance. Returns may vary from year to year and are not guaranteed. Where a distribution is declared, investors are advised that following the distribution, the NAV per unit will be reduced from the cum-distribution NAV to the ex-distribution NAV.

THIS DOCUMENT IS NOT AN OFFER TO PURCHASE UNITS OF THE MASTER FUNDS. The Phillip Master Trust Prospectus (Master Prospectus) dated 14th July 2017 and the First Supplementary Master Prospectus dated 1st October 2023 of the Fund have been registered with the Securities Commission and it can be obtained from any of our sales offices and institutional sales agents as listed in the master prospectus and first supplementary master prospectus. Any issue of units to which the master prospectus and first supplementary master prospectus relates will only be made upon receipt of the completed application form referred to in and accompanying the master prospectus and first supplementary master prospectus, subject to the terms and conditions therein. Under all circumstances, investors are advised to read and understand the contents of the Master Prospectus and First Supplementary Master Prospectus and consider the fees and charges involved before investing in the unit trust fund.

The Manager wishes to highlight the specific risks of the Fund are Interest Rate Risk, Credit/Default Risk, Inflation Risk and Liquidity Risk. These risks and other general risks are elaborated in the Master Prospectus. A Product Highlights Sheet is available and that investors have the right to request for a Product Highlights Sheet. The Product Highlights Sheet and any other product disclosure document should be read and understood before making any investment decision.